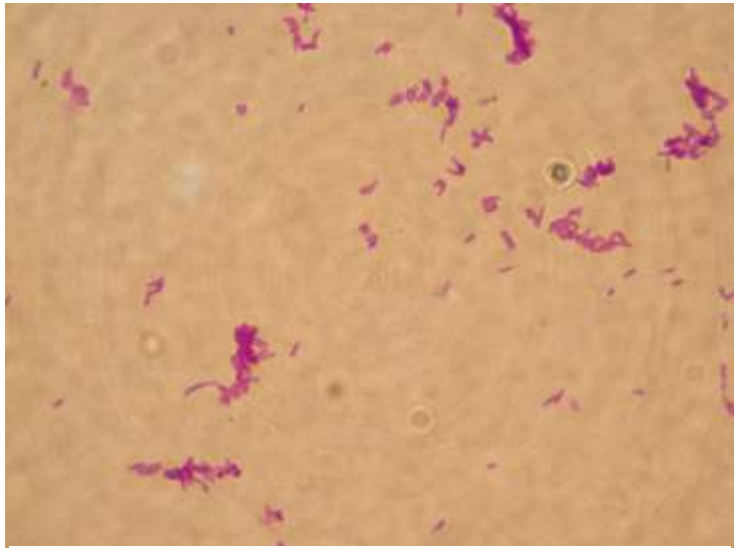


## Corynebacterium species

- Gram positive rods - may stain unevenly
- Rods variable shaped arranged singly, pairs, in V's or palisades.
- Non Spore-former
- Facultative anaerobe
- Catalase positive
- Non-encapsulated
- Non Motile (except for 2 species)
- Optimal growth at 35-37°C
- Not acid-fast but possesses mycolic acid in cells



*Corynebacterium diphtheriae* – 1000X magnification