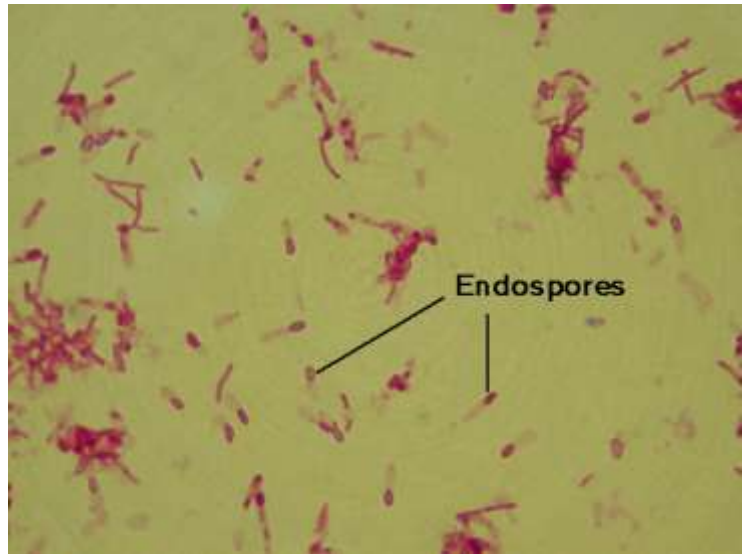


Genus *Clostridium*

- Gram positive rods - short chains, commonly pleomorphic
- Oval or spherical endospores
- Obligate anaerobes - a few aerotolerant (*C. histolyticum*)
- Catalase variable - usually negative
- Non-encapsulated
- Motility variable
- Optimal growth at 10-65°C
- 131 known species



Clostridium tetani – 1000X magnification

Most common toxigenic species - *C. difficile*

Most common invasive species - *C. perfringens*