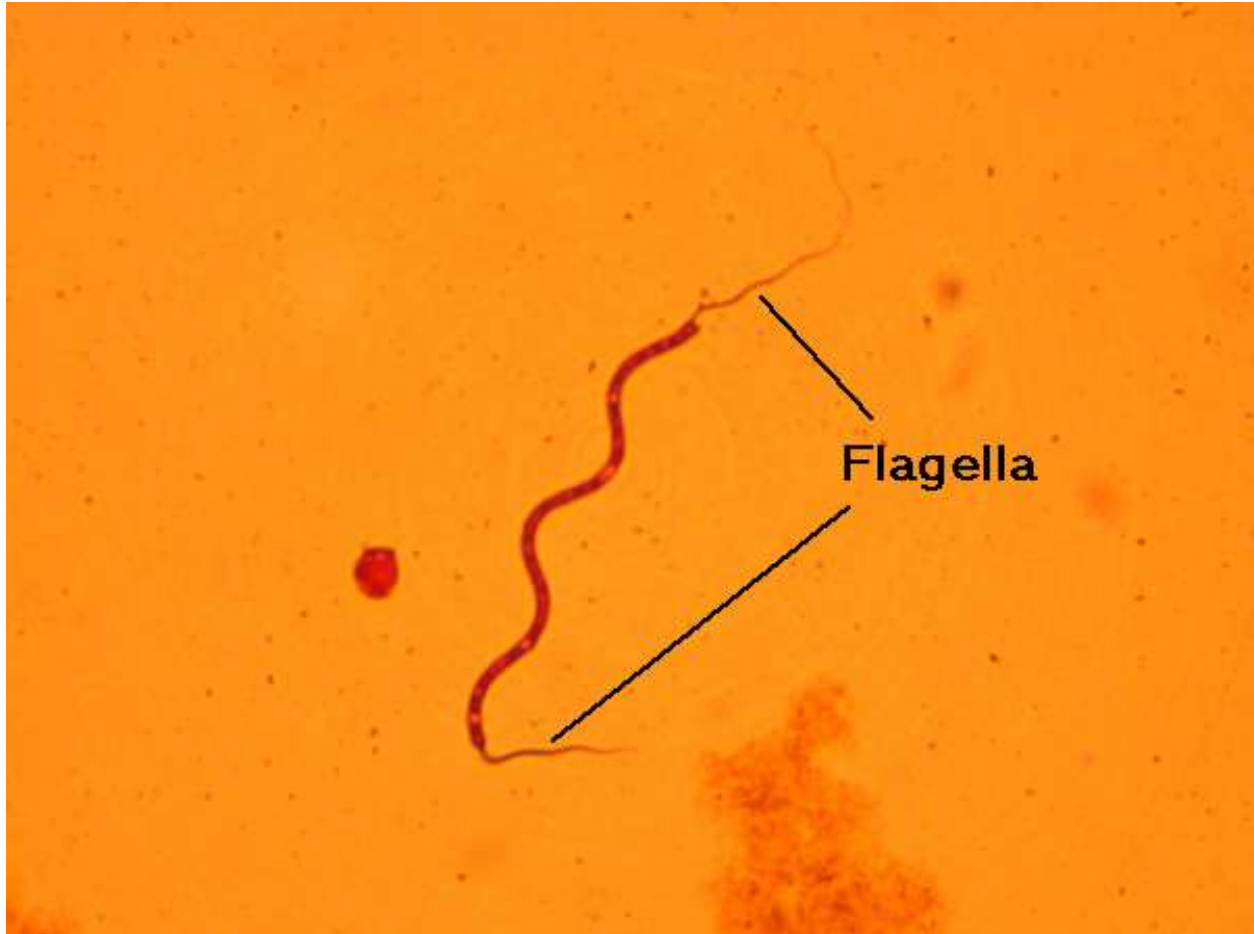


Bacterial Flagella – Polar amphitrichous

Many bacteria are motile because they possess whip-like flagella. Peritrichous flagella are distributed all over the cell; monotrichous flagella indicate just one; tufts of flagella at both ends of the cell are amphitrichous; and tufts of flagella at one end of the cell are lophotrichous. This is a very difficult and time-consuming stain because the flagella are very thin and fragile.



Spirillum volutans, a helical cell, moves by polar amphitrichous flagella; notice flagella at each end of the bacterial cell (1000X magnification).